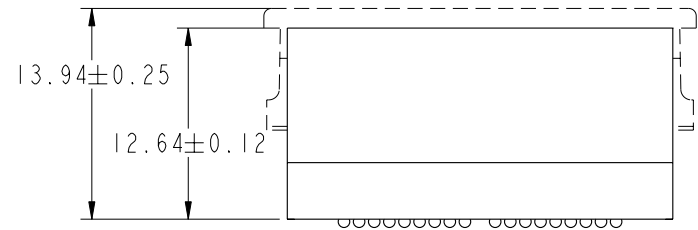
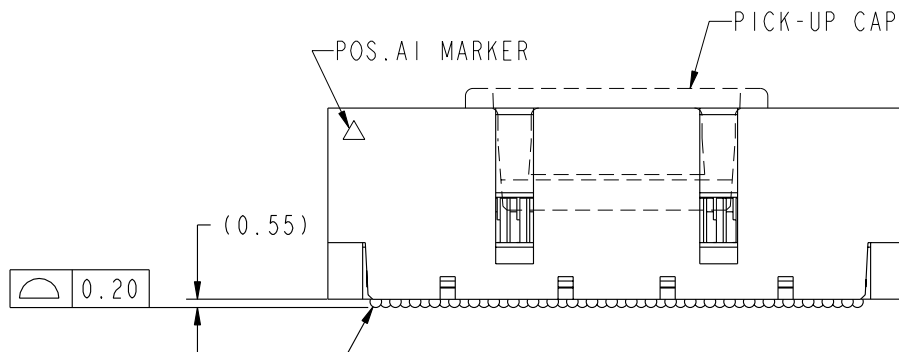
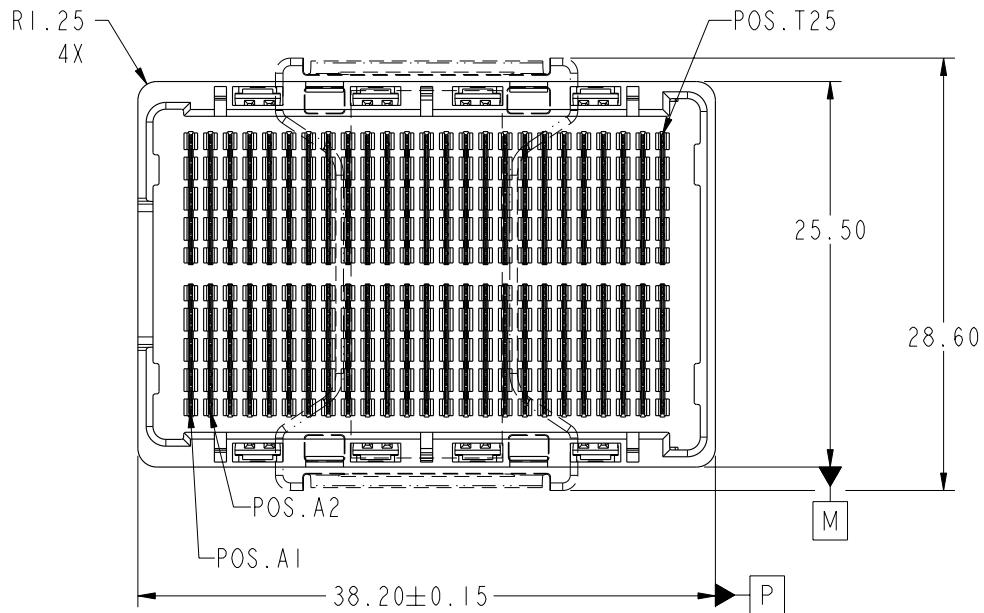




This document is the property of and embodies CONFIDENTIAL and PROPRIETARY information of FCI. No part of the information shown on this document may be used in any way or disclosed to others without the written consent of FCI. Copyright FCI.



Ø0.76 SOLDER BALLS  

⊕	Ø0.30	P	M
---	-------	---	---

 450X  
 SEE NOTE 2

mat'l code				SEE NOTE 1		tolerances unless otherwise specified		CUSTOMER		FCI www.fciconnect.com	
ltr	ecn no.	dr	date	linear	0.X ±0.3		COPY		projection	title	
A	V05-0062	TAB	01/19/05		0.XX ±0.10		MM			GIG-Array	
B	V05-0052	VS	10/14/05		0.XXX ±0.050		←→			13mm PLUG ASSY. 200 SIG. POS.	
C	V06-0558	LP	2006/06/12		0° ±2°		scale			product family GIG-Array code	
D	V07-0440	LP	2007-07-05	dr	T.BRUNGARD	06/20/03	1:1		size	dwg no	213
				engr	M.STRAWSER	06/20/03			A	10030626	sheet
				chr	M.STRAWSER	06/20/03					1 of 4
				appd	M.STRAWSER	06/20/03					
sheet index	revision sheet	D 1	D 2	D 3	D 4						

cage code 22526

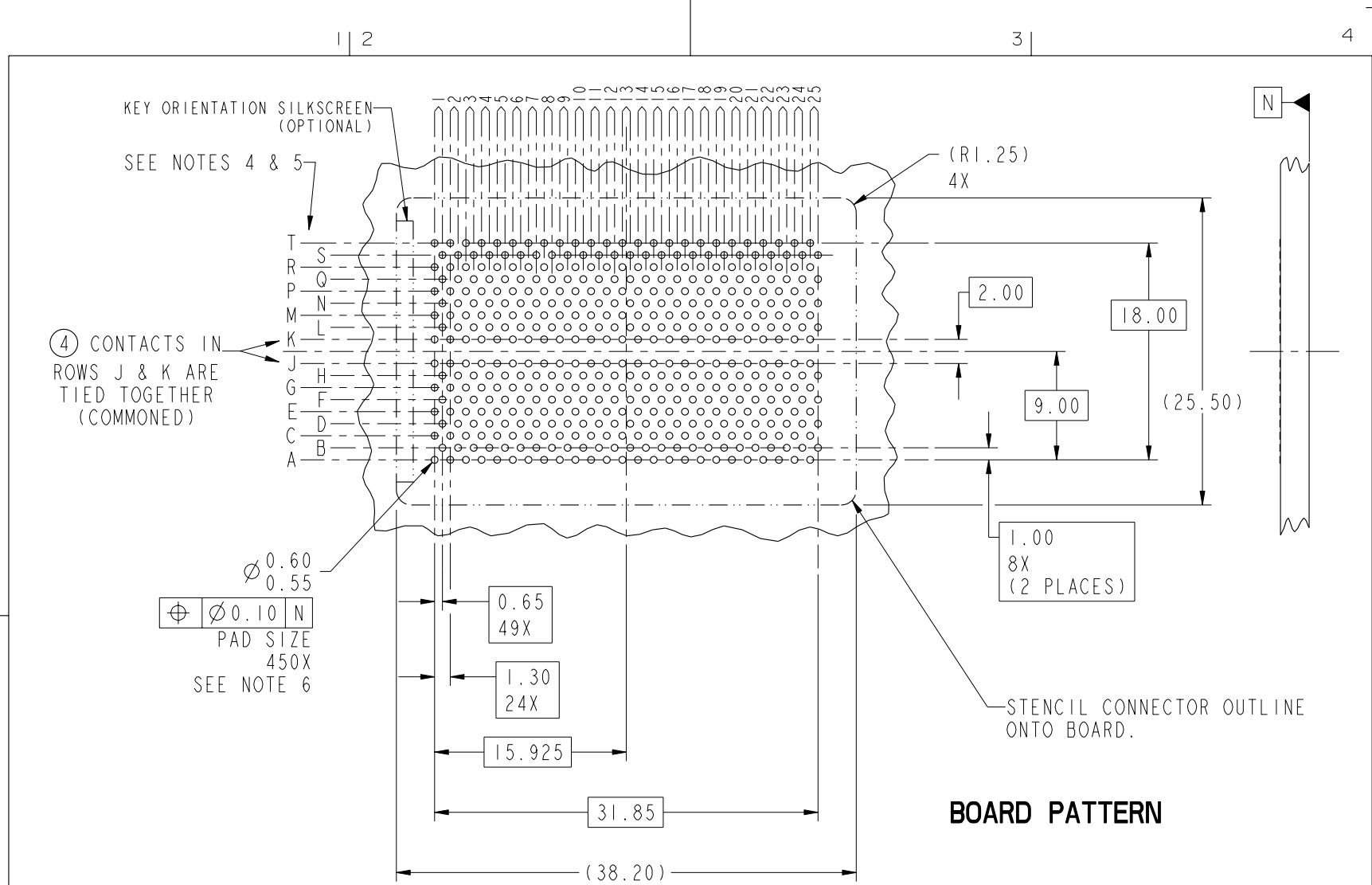
Pro/E

PDM: Rev:D

STATUS: Released

Printed: Dec 03, 2007

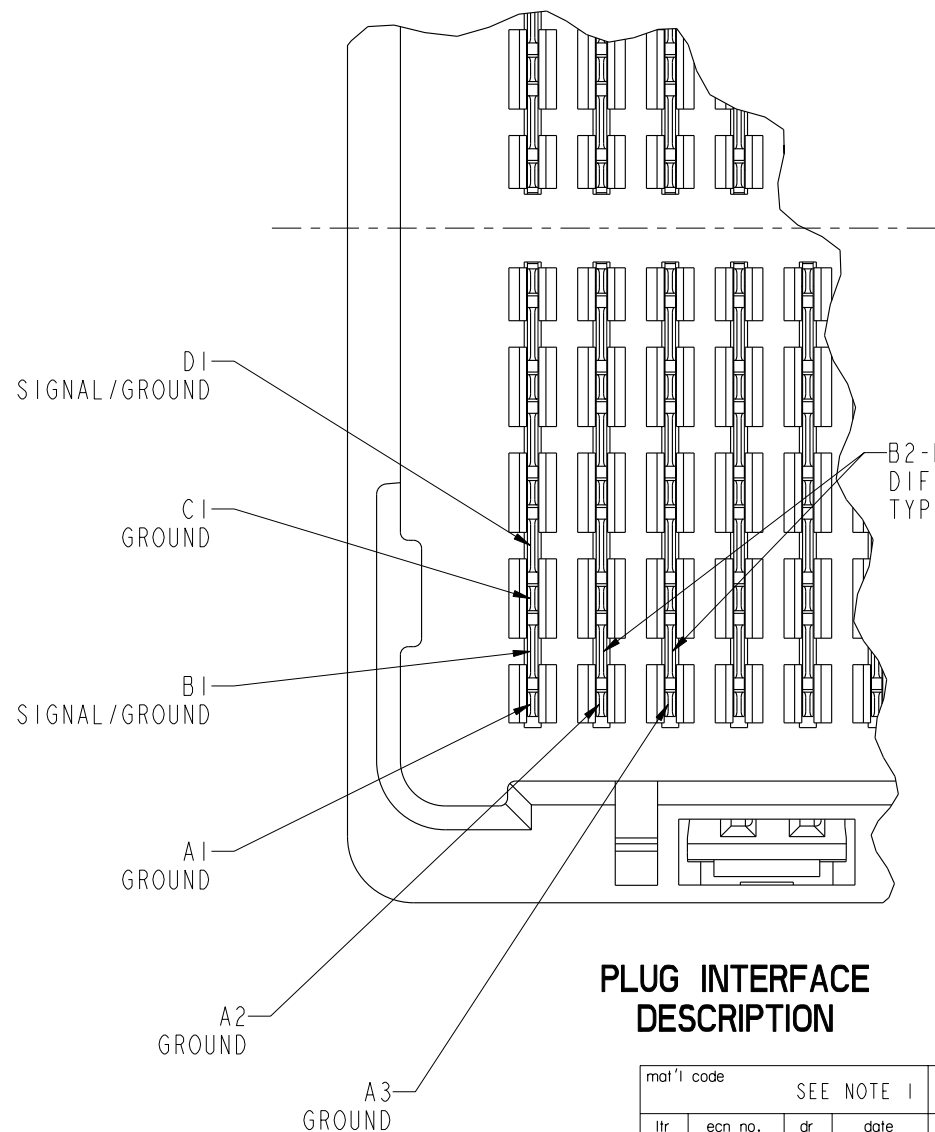
This document is the property of and embodies CONFIDENTIAL and PROPRIETARY information of FCI. No part of the information shown on this document may be used in any way or disclosed to others without the written consent of FCI. Copyright FCI.



$\varnothing 0.60$   
 $\varnothing 0.55$   
 $\varnothing 0.10$  N  
 PAD SIZE  
 450X  
 SEE NOTE 6

**BOARD PATTERN**

mat'l code				SEE NOTE 1		tolerances unless otherwise specified		CUSTOMER		www.fciconnect.com	
ltr	ecr no.	dr	date	linear	0.X ± 0.3		COPY			title	
D	-	-	-		0.XX ± 0.10		MM			GIG-Array	
					0.XXX ± 0.050		2:1			13mm PLUG ASSY. 200 SIG. POS.	
				angles	0° ± 2°		scale		product family		
				dr	T.BRUNGARD	06/20/03	A		GIG-Array		
				enr	M.STRAWSER	06/20/03	A		code		
				chr	M.STRAWSER	06/20/03	A		size		
				appd	M.STRAWSER	06/20/03	A		dwg no		
sheet index		revision sheet						A		10030626	
										213	
										sheet	
										2	



NOTES:

- ① MATERIAL:  
HOUSING: LCP  
CONTACT: COPPER ALLOY  
PLATING (CONTACT): Au OVER Ni.  
UL RATING: 94 V-0  
SOLDER BALL: (SEE TABLE) EUTECTIC SnPb OR LEADFREE 95.5 Sn/4Ag/0.5Cu
- ② SOLDER BALLS WILL NOT BE PERFECT SPHERICAL SHAPE DUE TO REFLOW ATTACHMENT.
- ③ MATED HEIGHT EFFECTED BY CUSTOMERS' PCB PAD SIZE, PLATING, SOLDER REFLOW PROFILE & SOLDER PASTE.
- ④ CONTACTS IN ROWS A,C,E,G,J,K,M,P,R AND T ARE SINGLE BEAM CONTACTS, TYPICALLY USED AS GROUND PINS. (NOTE: CONTACTS IN ROWS J & K ARE TIED TOGETHER [COMMONED])
- ⑤ CONTACTS IN ROWS B,D,F,H,L,N,Q AND S ARE DUAL BEAM CONTACTS, TYPICALLY USED AS SIGNAL PINS.

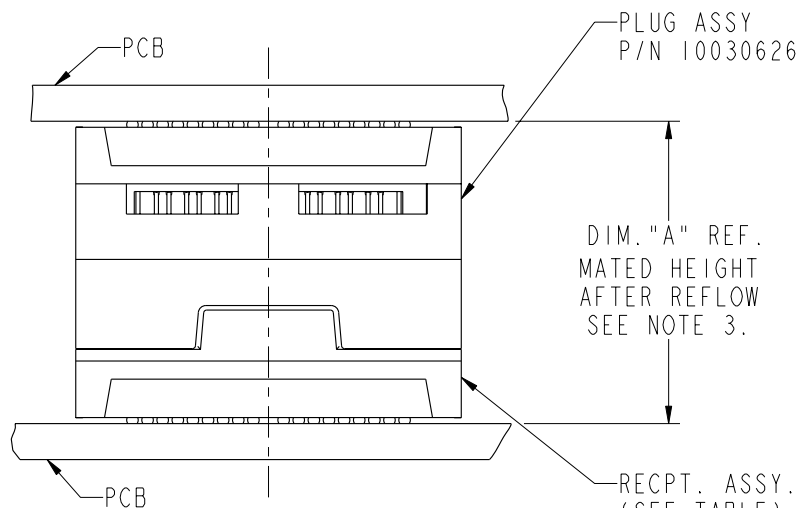
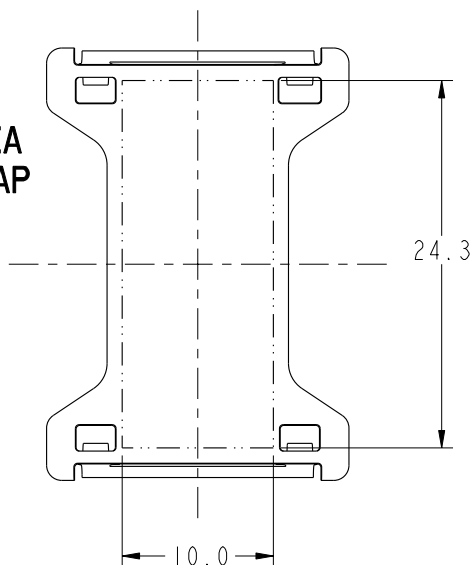
PLUG INTERFACE DESCRIPTION

mat'l code				SEE NOTE 1		tolerances unless otherwise specified		CUSTOMER		FCj www.fciconnect.com	
ltr	ecn no.	dr	date	linear	0.X ±0.3		COPY		projection	title	
D	-	-	-		0.XX ±0.10		MM			GIG-Array	
					0.XXX ±0.050		7:1			13mm PLUG ASSY. 200 SIG. POS.	
				angles	0° ±2°		scale		product family		
				dr	T.BRUNGARD	06/20/03			GIG-Array		
				engr	M.STRAWSER	06/20/03			code		
				chr	M.STRAWSER	06/20/03			213		
				appd	M.STRAWSER	06/20/03			sheet		
sheet index		revision sheet								3	

This document is the property of and embodies CONFIDENTIAL and PROPRIETARY information of FCj. No part of the information shown on this document may be used in any way or disclosed to others without the written consent of FCj. Copyright FCj.

PRODUCT NUMBER	SOLDER BALL
10030626-001	SnPb
10030626-001LF	SnAgCu LEADFREE (7)(8)

FLAT AREA  
PICK-UP CAP



END VIEW OF MATED CONNECTORS

DIM. "A"	RECPT. ASSY. P/N
18	55740
23	10026010
28	55741

NOT TOOLED

NOTES CONTINUED

(6) SPECIFIED POSITIONAL TOLERANCE DEFINES PAD TO PAD LOCATION WITHIN LAND PATTERN. POSITIONAL TOLERANCE OF LAND PATTERN TO FUDICIAL MARKS OR PCB DATUMS SHALL BE DEFINED BY CUSTOMER. FOR RECOMMENDED PRODUCT APPLICATION AND PCB DESIGN DETAILS, SEE DOC. NO. GS-20-016.

(7) FOR PROPER APPLICATION FOLLOW FCI APPLICATION SPECIFICATION GS-20-033 LEADFREE SOLDER BALLS WILL NOT SOLDER PROPERLY IN A LEADED SOLDER PROCESS DUE TO A HIGHER REFLOW TEMPERATURE, LEADFREE PRODUCT IS THEREFORE NOT BACKWARDS COMPATIBLE WITH LEADED OR SOME SOLDERING APPLICATIONS. REFERENCE FCI APPLICATION SPECIFICATION.

(8) THIS PRODUCT MEETS THE EUROPEAN UNION DIRECTIVES AND OTHER COUNTRY REGULATIONS AS DESCRIBED IN GS-22-008. PRODUCT MEETING WITH THIS DIRECTIVE IS IDENTIFIED IN THE LOT CODE NUMBER MARKED ON EACH PART BY HAVING AN "X" IN THE SEVENTH CHARACTER POSITION.

mat'l code				SEE NOTE 1		tolerances unless otherwise specified		CUSTOMER		FCI www.fciconnect.com	
ltr	ecr no.	dr	date	linear	0.X ±0.3		COPY		projection	title	
D	-	-	-		0.XX ±0.10		MM			GIG-Array	
					0.XXX ±0.050		←→			13mm PLUG ASSY. 200 SIG. POS.	
				angles	0° ±2°		scale		product family		
				dr	T.BRUNGARD	06/20/03	1:1		GIG-Array		
				engr	M.STRAWSER	06/20/03			code		
				chr	M.STRAWSER	06/20/03			size		
				appd	M.STRAWSER	06/20/03			dwg no		
sheet index		revision sheet						A		10030626	
										213	
										sheet	
										4	

This document is the property of and embodies CONFIDENTIAL and PROPRIETARY information of FCI. No part of the information shown on this document may be used in any way or disclosed to others without the written consent of FCI. Copyright FCI.